

The Cold Chain Reinvented.

SnowSHIP™

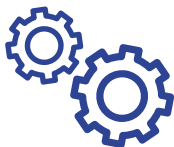
Introducing the revolutionary shipping solution designed specifically for temperature-sensitive goods.



RELIABLE Control

Innovative heat exchange system

Temperature set point:
-30°C - +5°C (-22°F - +41°F)



LOW Emissions

Powered by liquid CO₂

Net zero carbon footprint

Zero NOx PM emissions or noise



INNOVATIVE Design

Rugged, scalable and customizable

Thin-walled VIP thermal insulation

IoT Enabled



SnowSHIP™ Details



Designed for the Less-Than-Load (LTL) transportation market, the SnowSHIP™ allows for pin-point temperature precision throughout the shipping cycle.

Reduce your OpEx & CapEx, improve operating efficiencies, and improve customer satisfaction by adopting the SnowSHIP™ into your supply chain.

Outer Dimensions: 49" W x 59" L x 80" H
Payload Dimensions: 40" W x 48" L x 58" H
Tare Weight: 1,200 LBS
Max Payload Weight: 4,000 LBS

Coolant: Liquid CO₂

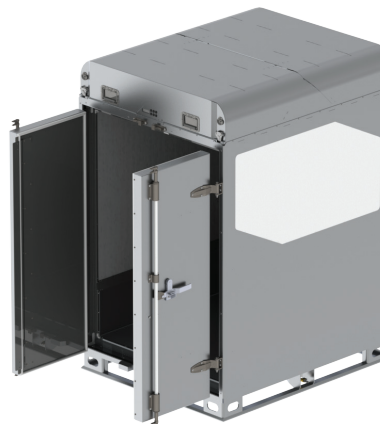
Ambient Temperature Range: -30°C - +40°C (-22°F - +104°F)

SnowSHIP™ Cooling Range: -27°C (-16.6°F) - Ambient

Operating Duration:	Set Point	Duration	Days*
(Based on 8 x 20lb Tanks, 20°C/68°F Ambient Temperature, and With a Pre-Conditioned Load That Remains Sealed Throughout Shipping and Kept Conditioned When Not in Operation)	+5°C (41°F)	164.6 hours	20.6 Days
	+0°C (32°F)	123.4 hours	15.4 Days
	-5°C (23°F)	98.8 hours	12.3 Days
	-10°C (14°F)	82.2 hours	10.3 Days
	-20°C (-4°F)	61.6 hours	7.7 Days

*8 Hour Operating Days

ALTERNATE VIEWS



*PATENT PENDING